



# ProxKey® II Keyfob Ordering Form

Please ensure each required option has been checked with the appropriate choice to fulfill a completed order form.

**1346 Base Model**

### Programming (Check One)

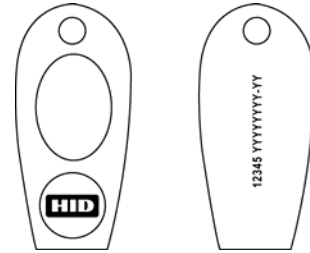
- L - Programmed, Low Frequency (125 kHz). Specify Programming Information.
- N - Non-Programmed, Low Frequency (125 kHz). Programming Information Not Required.

### Front Packaging

- S - Standard HID Logo

### Back Packaging

- S - Standard



Front Packaging    Back Packaging

### Keyfob Numbering<sup>1</sup> (Check One)

- M - Sequential Matching Internal/External (Inkjetted)
- N - No External Card Numbering
- S - Sequential Internal/Sequential Non-Matching External (Inkjetted)
- R - Random Internal/Non-Matching Sequential External (Inkjetted)
- A - Sequential Matching Internal/External (Engraved)<sup>2</sup>
- B - Sequential Internal/Sequential Non-Matching External (Engraved)<sup>2</sup>
- C - Random Internal/Non-Matching Sequential External (Engraved)<sup>2</sup>

12345 = Keyfob ID Number YYYYYYYY-YY = Sales Order Number
--

### Slot Punch<sup>3</sup>

- N - No Option

Please enter your final ProxKey options from check boxes above. Example: 1346LSSMN

Final Part Number	1346		S	S		N	-	(Optional Artwork #)
-------------------	------	--	---	---	--	---	---	----------------------

## 125 kHz ProxKey Programming Information

Bit Numbers \_\_\_\_\_ (example: 26 bit)      Format Number \_\_\_\_\_ (example: H10301)

Facility Code \_\_\_\_\_

(Custom Formats) Site Code \_\_\_\_\_ City Code \_\_\_\_\_ OEM Code \_\_\_\_\_

Internal Key No. Start \_\_\_\_\_ Stop \_\_\_\_\_

External Key No. Start \_\_\_\_\_ Stop \_\_\_\_\_

Special Instructions: \_\_\_\_\_

<sup>1</sup> The external number is placed on the back of the Keyfob.

<sup>2</sup> For Laser Engraved external numbers, consult factory for lead times and cost.

<sup>3</sup> Key Ring sold separately (Part Number: 57-0001-02).